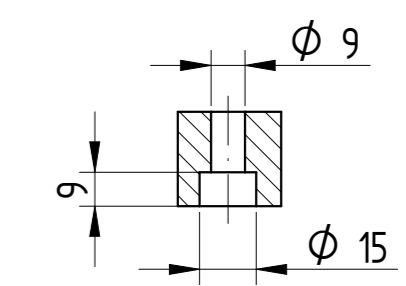
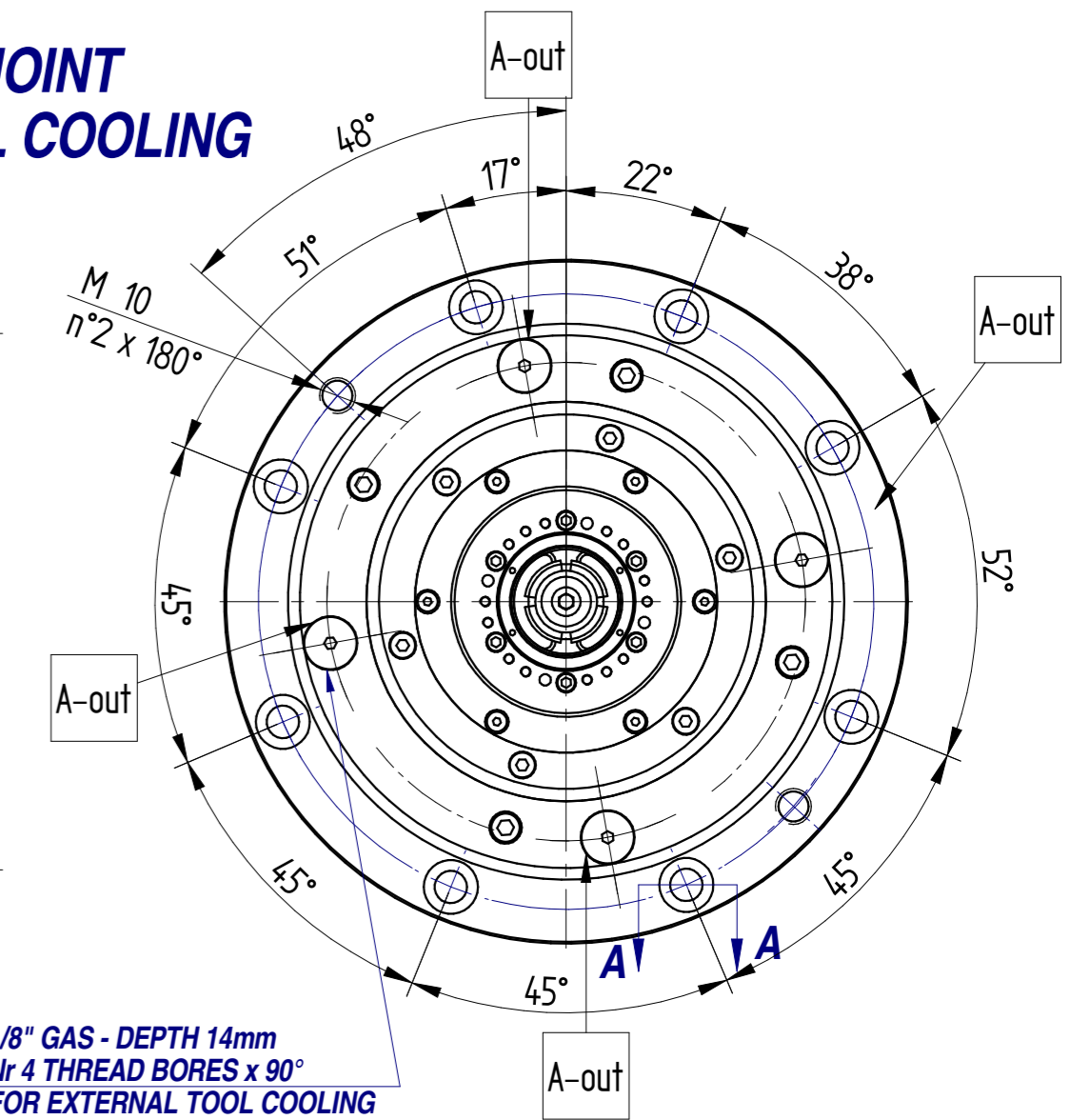
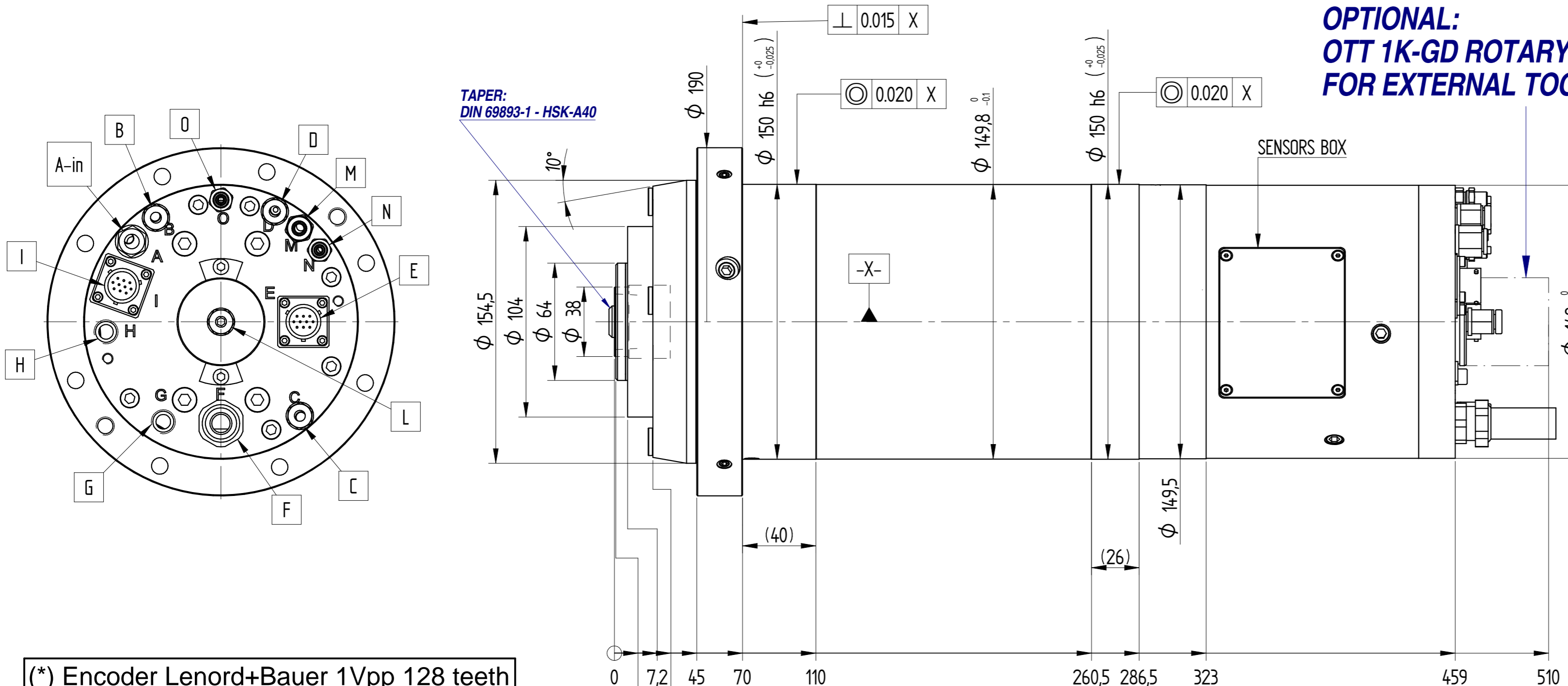
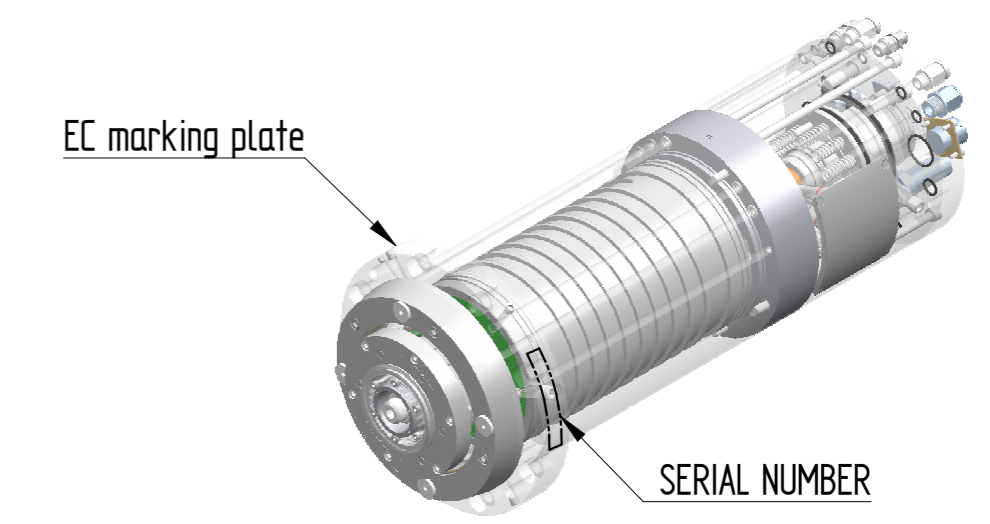


**OPTIONAL:
OTT 1K-GD ROTARY JOINT
FOR EXTERNAL TOOL COOLING**

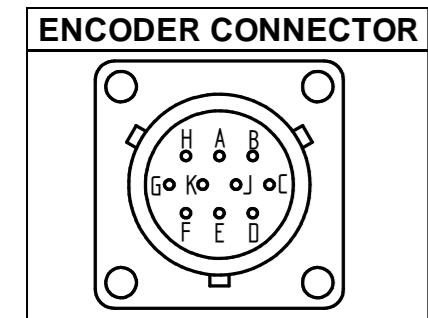


SEZ. A-A

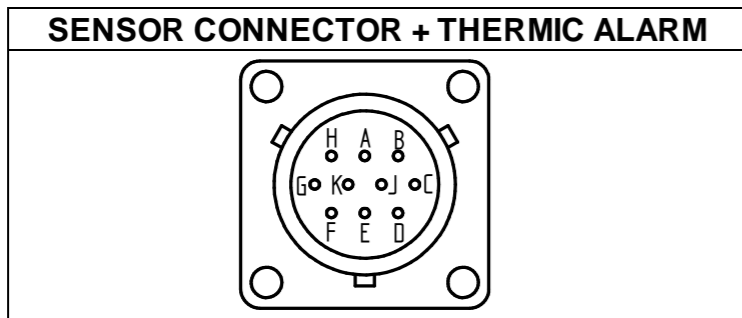


15

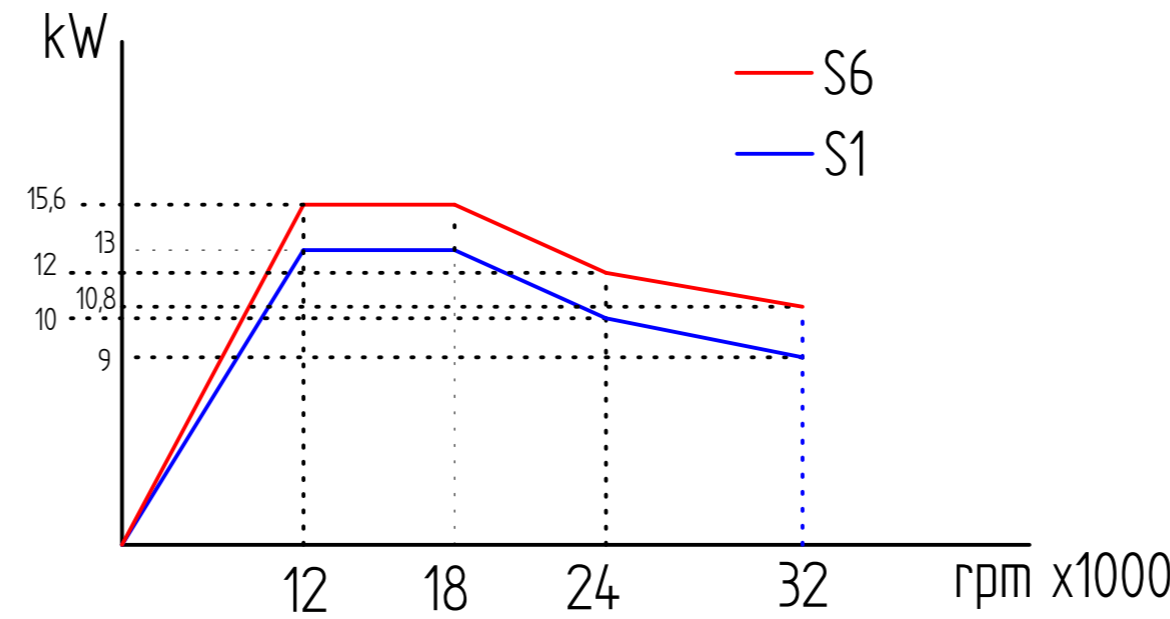
(*) Encoder Lenord+Bauer 1Vpp 128 teeth



PIN	DESCRIPTION
A	A+
B	A-
C	B-
D	GND
E	Z+
F	5V
G	SCREEN
J	B+
K	Z-



PIN	DESCRIPTION
A	OUTPUT S2 (TOOL UNLOCKED)
B	OUTPUT S1+S4 (TOOL LOCKED)
C	OUTPUT S5 (NO TOOL)
D	24V CC FEEDING SENSORS: S1, S2, S5
E	0V FEEDING SENSORS: S1, S2, S4, S5
F	THERMIC BEARINGS ALARM - T2
G	THERMIC MOTOR ALARM - BIMETALLIC N.C. 130°C
H	THERMIC BEARINGS ALARM - COMPENSATION
J	THERMIC BEARINGS ALARM - T1
K	THERMIC MOTOR ALARM - BIMETALLIC N.C. 130°C



AIR-OIL LUBRICATION DATA / FRONT BEARINGS	
Oil type	MOBIL DTE OIL HEAVY MEDIUM VG68
Oil quantity (mm3/h)	140 ÷ 170
Pressure (bar)	1,5 ± 0,2

AIR-OIL LUBRICATION DATA / REAR BEARINGS	
Tipo olio	MOBIL DTE OIL HEAVY MEDIUM VG68
Q.tà olio (mm3/h)	140 ÷ 170
Pressione (bar)	1,5 ± 0,2

POWER CABLE - LENGTH 1000mm			
WHITE	PHASE U	AWG10	
RED	PHASE V	AWG10	
BLACK	PHASE W	AWG10	
YELLOW/GREEN	GROUND	AWG10	

	380	380	380	380
V	380	380	380	380
Hz	400	600	800	1066
kW	13 (15,6)	13 (15,6)	10 (12)	9 (10,8)
Nm	10,3 (12,3)	6,9 (8,3)	4 (4,8)	2,7 (3,2)
A	27,5 (33)	27,5 (33)	21,5 (25,8)	18 (21)
rpm	12000	18000	24000	32000
Poles: 4	Ins.Cl. F	cosφ = 0,77	η = 0,88	

HYDRAULIC AND ELECTRIC CONNECTIONS	
POS	DESCRIPTION
A	EXTERNAL TOOL COOLING INLET - Ø8
B	MOTOR COOLING LIQUID INLET - Ø6
C	PRESSURISATION - 4bar - Ø6
D	MOTOR COOLING LIQUID OUTLET - Ø6
E	ENCODER (*) CONNECTOR - see detail
F	POWER CABLES - see detail
G	OIL INLET FOR TOOL-HOLDER HOOK-UP - 40bar - Ø8
H	OIL INLET FOR TOOL-HOLDER RELEASE - 40bar - Ø8
I	SENSOR CONNECTOR + THERMIC ALARM - see detail
L	CONE CLEANING - 6bar - Ø6
M	OIL SUCTION BEARINGS FRONT/REAR -Ø8
N	AIR-OIL LUBRICATION INLET FRONT BEARINGS - Ø6 - 1,5bar
O	AIR-OIL LUBRICATION INLET REAR BEARINGS - Ø6 - 1,5bar

REVISIONE				HSD DIVISION	
REV.	DESCRIZIONE REVISIONE / REVISION DESCRIPTION	N° REV	DATA / DATE	FIRMA / SIGN	SCALE / SCALA
					12
	DESIGNATO / DRAWN BY	CONTROLLATO / CHECKED BY	APPROVATO / APPROVED	PESO / WEIGHT: 30,734 kg	FOGLIO / SHEET: 1 / 1
	DATA DATE	28/10/2014	28/10/2014	GREZZO DI / RAW:	QUOTE SENZA INDICAZIONE DI TOLLERANZA POSIZIONI WITHOUT TOLERANCE INFORMATION
	FIRMA / SIGN	Bernabucci L.	Pietro Paolo A.		LAVORAZIONI MECCANICHE / MECHANICAL WORKINGS: UNI EN 22768-FH
	MATERIALE / MATERIAL:				SALDOCARPENTERIE / WELDMENT:
	TRATTAMENTO TERMICO / HEAT TREATMENT:				GETTI / MELT CASTING:
	RIVESTIMENTO SUPERFICIALE / SURFACE TREATMENT:				CICLO DI VERNICIATURA / PAINTING CYCLE:
	DENOMINAZIONE / DESCRIPTION:	DIM. ES332 A40 13kW ENC L+B V14 32krpm			CORRE / ARTICOLO / DRAWING ID: 5530H0716