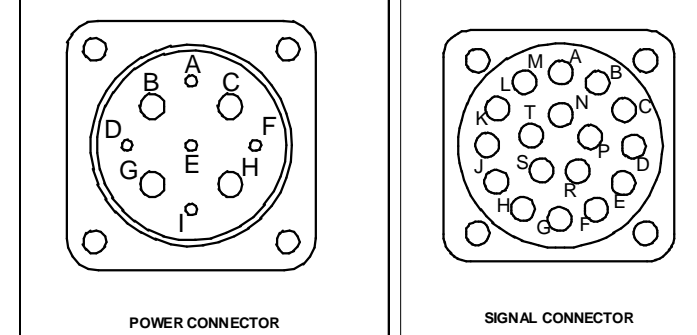
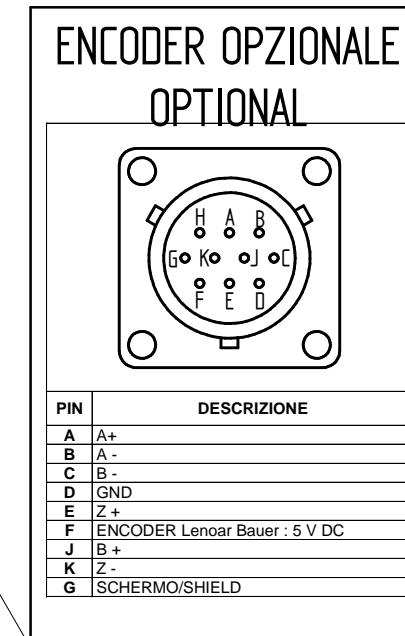
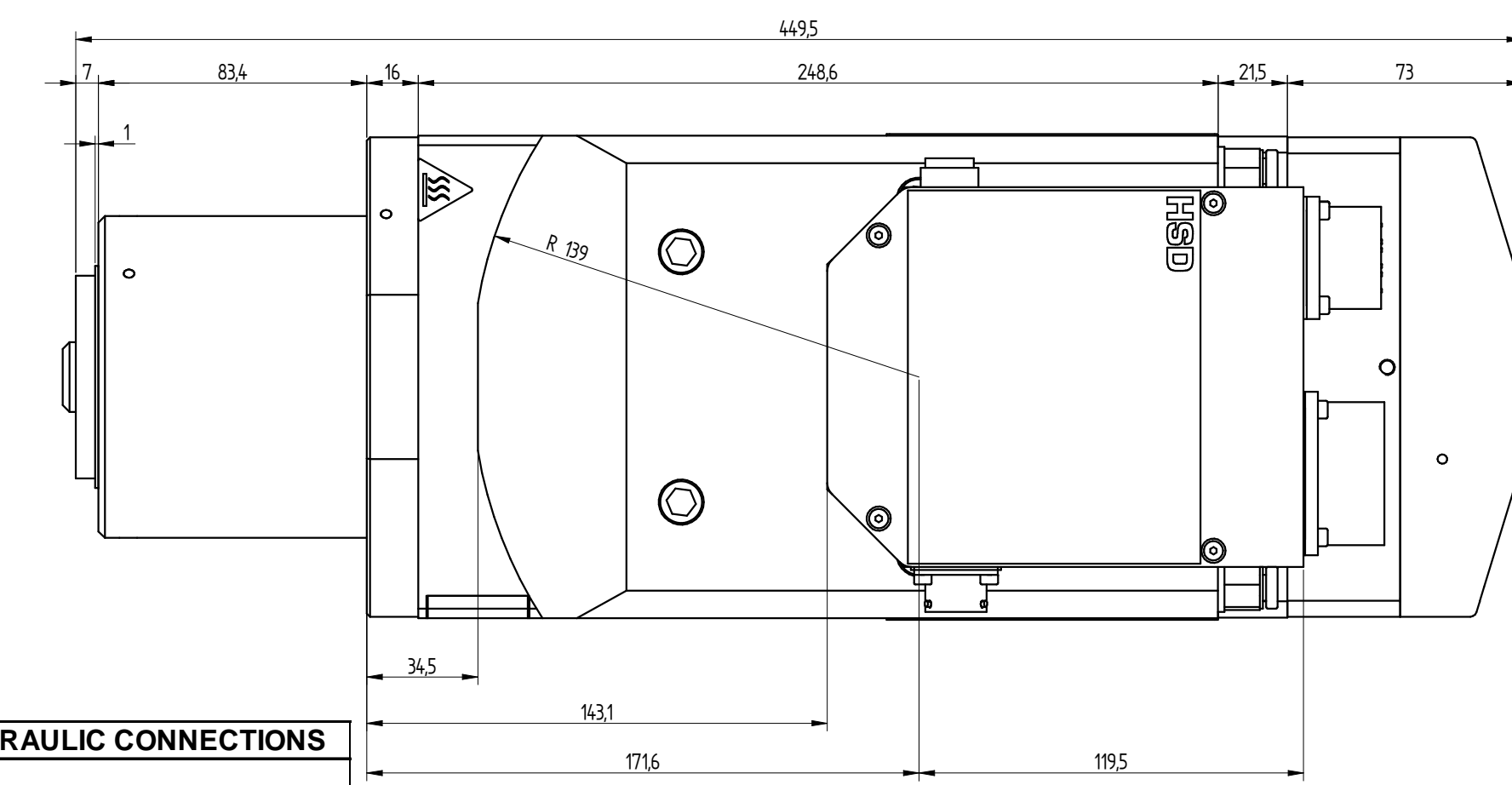
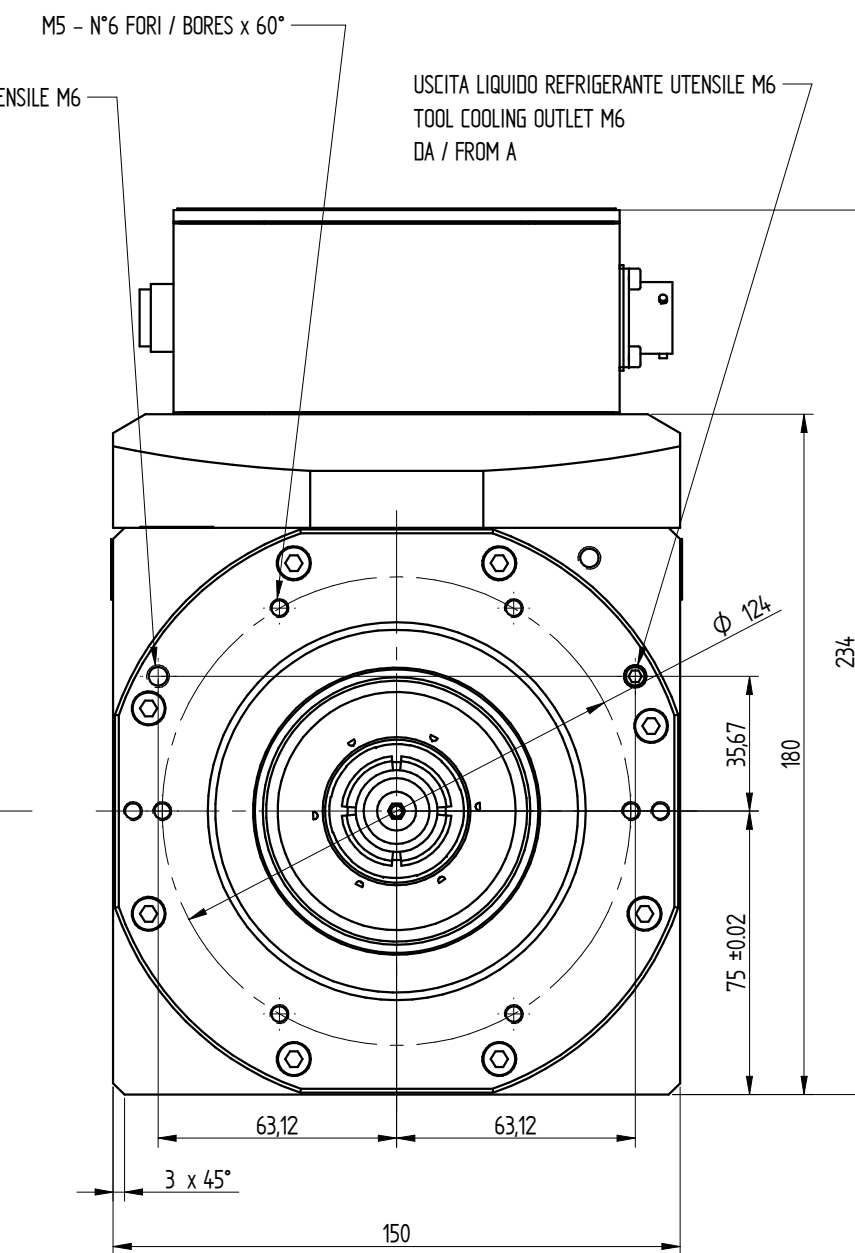
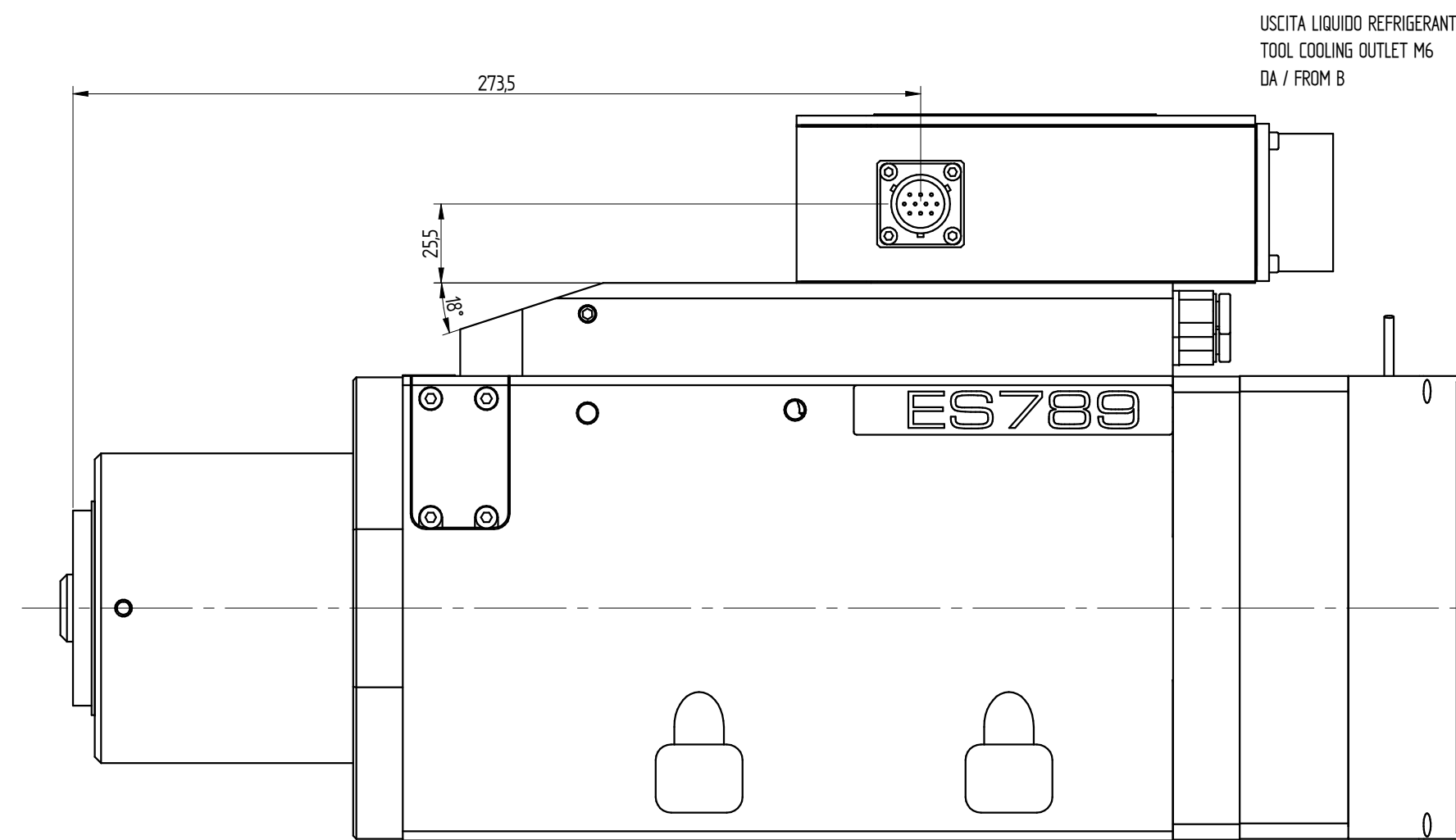
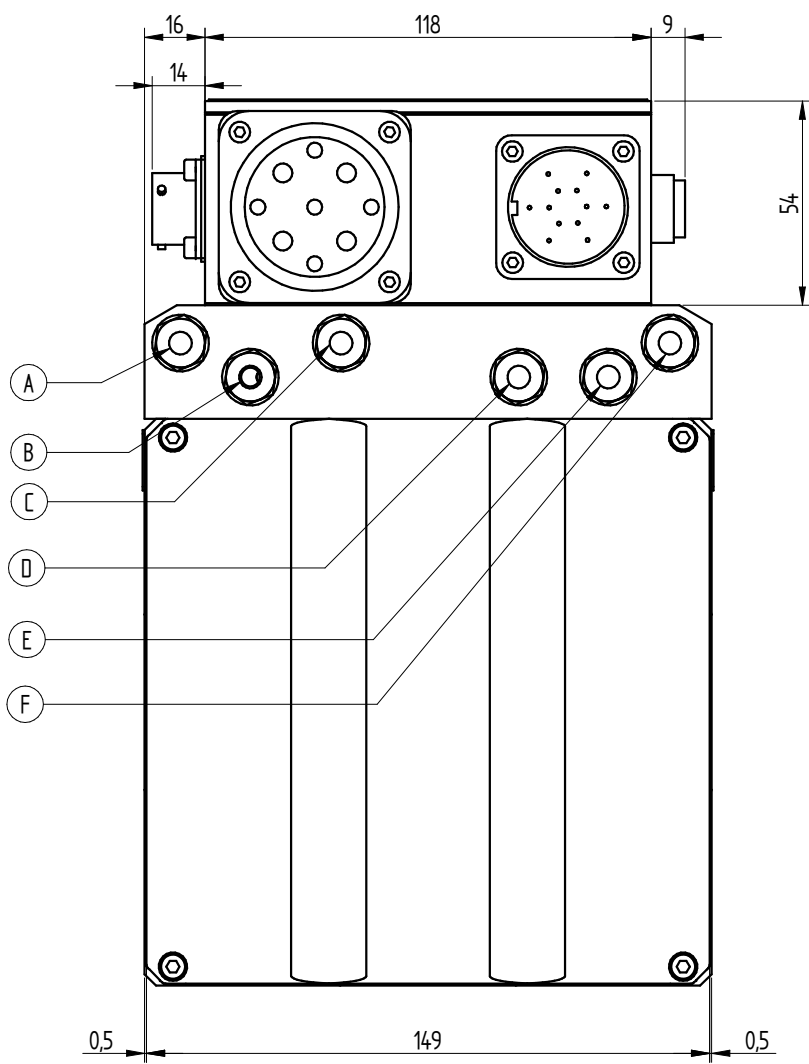
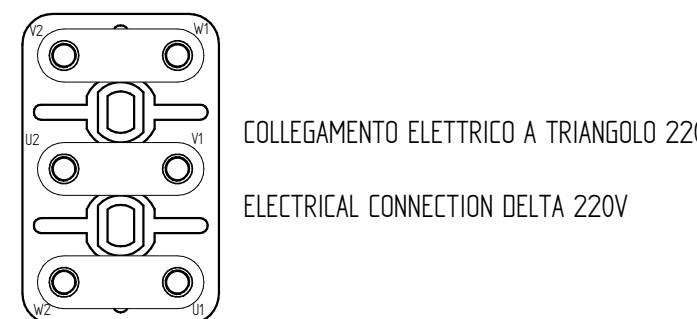
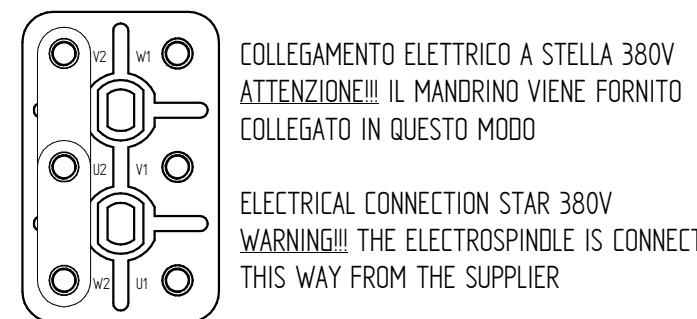


1:5



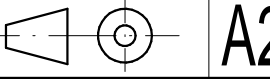
PIN	DESCRIZIONE
A	OUTPUT sensor S2 (utensile espulso-tool unlocked)
B	OUTPUT serie sensors S1+S4 (utensile bloccato-tool locked)
C	OUTPUT sensor S3 (albero fermo - shaft not running)
D	+24V CC alimentazione/feeding sensor: S1, S2, S3
E	+24V CC alimentazione/feeding lamp of the pushbutton - LAMPADINA del pulsante.
F	0V alimentazione/feeding sensor S1, S2, S3, S4
G	+24V CC alimentazione/feeding PULSANTE pushbutton sensor SC (Azzeramento Asse C - Zeroing for C-Axis)
H	OUTPUT PULSANTE pushbutton
J	0V alimentazione/feeding LAMPADINA - lamp of the pushbutton, sensor SC - sensor C-Axis
L	OUTPUT sensor SC - sensor C-Axis (azzeramento Asse C - Zeroing for C-Axis)
M	Per manutenzione - Maintenance
N	
P	
K	
R	
S	
T	



UTENZE PNEUMATICHE E IDRAULICHE / PENUMATIC & HYDRAULIC CONNECTIONS	
RIF	DESCRIZIONE / DESCRIPTION
A	Ø6 - Ingresso liquido refrigerante utensile / Tool cooling liquid inlet
B	Ø6 - Ingresso liquido refrigerante utensile / Tool cooling liquid inlet
C	Ø6 - Ingresso liquido refrigerante elettromandrino / Electrospindle cooling liquid inlet
D	Ø6 - Uscita liquido refrigerante elettromandrino / Electrospindle cooling liquid outlet
E	Ø6 - Ingresso aria pressurizzazione e pulizia cono / Pressurization and cone cleaning air inlet
F	Ø6 - Ingresso/uscita aria per cambio utensile / Tool release air I/O

1		Insert instruction for connect the shield with PIN G	25/3/2014	LB.
REV.	DESCRIZIONE REVISIONE / REVISION DESCRIPTION		DATA / DATE	FIRMA SIGN
DESIGNATO / DRAW BY	CONTROLLATO / CHECKED BY	APPROVATO / APPROVED	SCALA : SCALE :	1 : 2
DATA DATE	11/06/2012		PESO : WEIGHT :	35,288 kg
FIRMA SIGN	Bugari M.		GREZZO DI : RAW :	
MATERIALE : MATERIAL :			SOSTITUISCE : REPLACE :	
TRATTAMENTO TERMICO : HEAT TREATMENT :			CICLO DI VERNICIATURA : PAINTING CYCLE :	
RIVESTIMENTO SUPERFICIALE : SURFACE TREATMENT :			REVISIONE REVISION :	
DENOMINAZIONE : DESCRIPTION :	DIM. ES789 F63 NL 15kWDP 220/380V BAS.MIL ENC LB		REVISIONE REVISION :	
RIPRODUZIONE E/O DIFFUSIONE VIETATA / REPRODUCTION AND OR DISCLOSURE OF THE DRAWING IS FORBIDDEN				CODICE ARTICOLO / DRAWING NO :
				5530H0664

HSD DIVISION



A2

QUOTE SENZA INDICAZIONE DI TOLLERANZA POSIZIONI WITHOUT TOLERANCE INFORMATION - LAVORAZIONI MECCANICHE - MECHANICAL WORKINGS: UNI EN 22768-FH

SALDOCARPENTERIE : WELDMENT; GETTI / MELT CASTING :